

**Sail the ATLANTIC. SICILY to CANARY Is.  
CARIBBEAN, Transit PANAMA CANAL  
PANAMA to TAHITI to AUSTRALIA**

*With world sailor & adventurer*

**TONY MOWBRAY on his famed 43ft yacht  
“SOLO GLOBE CHALLENGER”**

*Individual or multiple legs available*

**Masterclass sailing tuition or sailing holiday**

**Your choice**

**LIMITED BERTHS!**



**UNLEASH THE SENSE OF  
ADVENTURE WITHIN YOU**

**In late November 2018** Tony Mowbray will set sail from Sicily, Italy on a 14,000nm sailing adventure with the ultimate destination being Australia via The Panama Canal

Stopping along the way you can sign on and **join Tony for a leg or more** on his solo around the world 43ft yacht 'Solo Globe Challenger' (aka BowTie Lady)

A rare opportunity for a **GREAT SAILING HOLIDAY/ADVENTURE** or significantly increase your sailing skills as you immerse yourself in a personalised **SAILING MASTERCLASS**.

Learn how to prepare for & cross an ocean or kick back & enjoy the ride. Your call entirely!

Starting in Sicily (Italy) the adventure will include The Canary Islands, The Atlantic Ocean, Caribbean, **transit The Panama Canal** , Sth Pacific including Tahiti and on to Australia.

**There are limited opportunities so to avoid disappointment register your interest**



***Team Mowbray Adventures***

**LEG #1 CATANIA (Sicily) to CANARY ISLANDS** Approx. 14 days sailing + 2 days either side (Total 18 days)

**LEG #2 CANARY ISLANDS to CARIBBEAN** Approx. 23 days sailing + 2 days either side (Total 27 days)

**LEG #3 CARIBBEAN to PANAMA CANAL (Atlantic side)** Approx. 10 days sailing + 2 days either side (Total 14 days)

**LEG #4 Transit the PANAMA CANAL to PACIFIC SIDE** Approx. 2 days transit + 5 days (Total 7 days) A few days will be spent preparing the boat to transit the canal before doing so and popping out on the Pacific side

**LEG #5 PACIFIC side of PANAMA CANAL to MARQUESAS (TAHITI)** Approx. 32 days sailing + 2 days either side (Total 36 days) TAHITI LOOKS NICE!....and it is!

**LEG #6 MARQUESAS (Tahiti) to PAPEETE (Tahiti)** Approx. 6 days sailing + 2 days either side (Total 10 days)

**LEG #7 & more. PAPEETE (Tahiti) to NEWCASTLE, AUSTRALIA** . Dates/itinerary to be advised....possibly Fiji and Bay of Islands NZ. Register your interest + availability

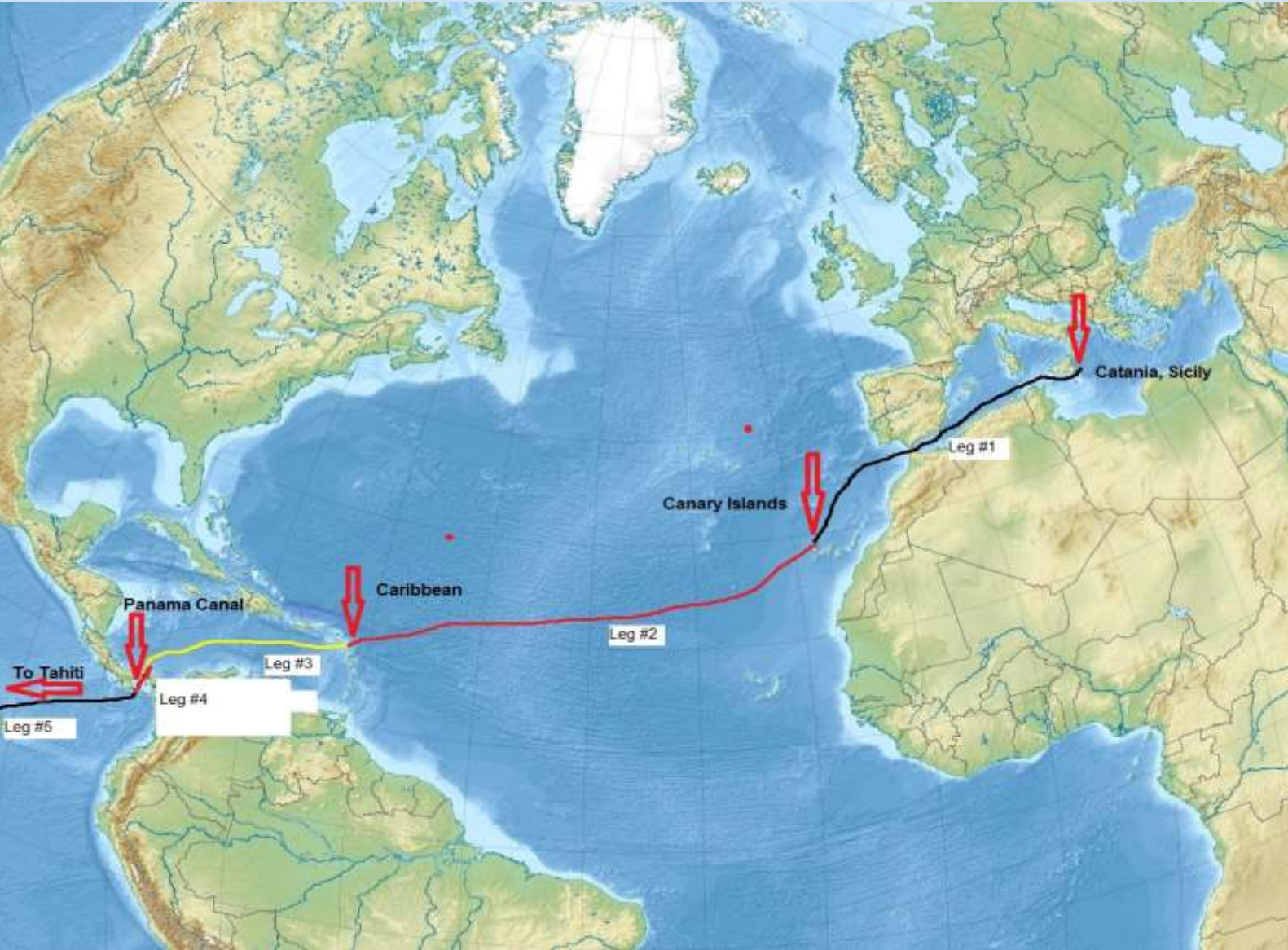
**SAILING EXPERIENCE IS NOT NECESSARY.....AGE/GENDER? WHO CARES!**

**We encourage people of all ages who seek positive, different and rewarding experiences in life .....we live the moment!**

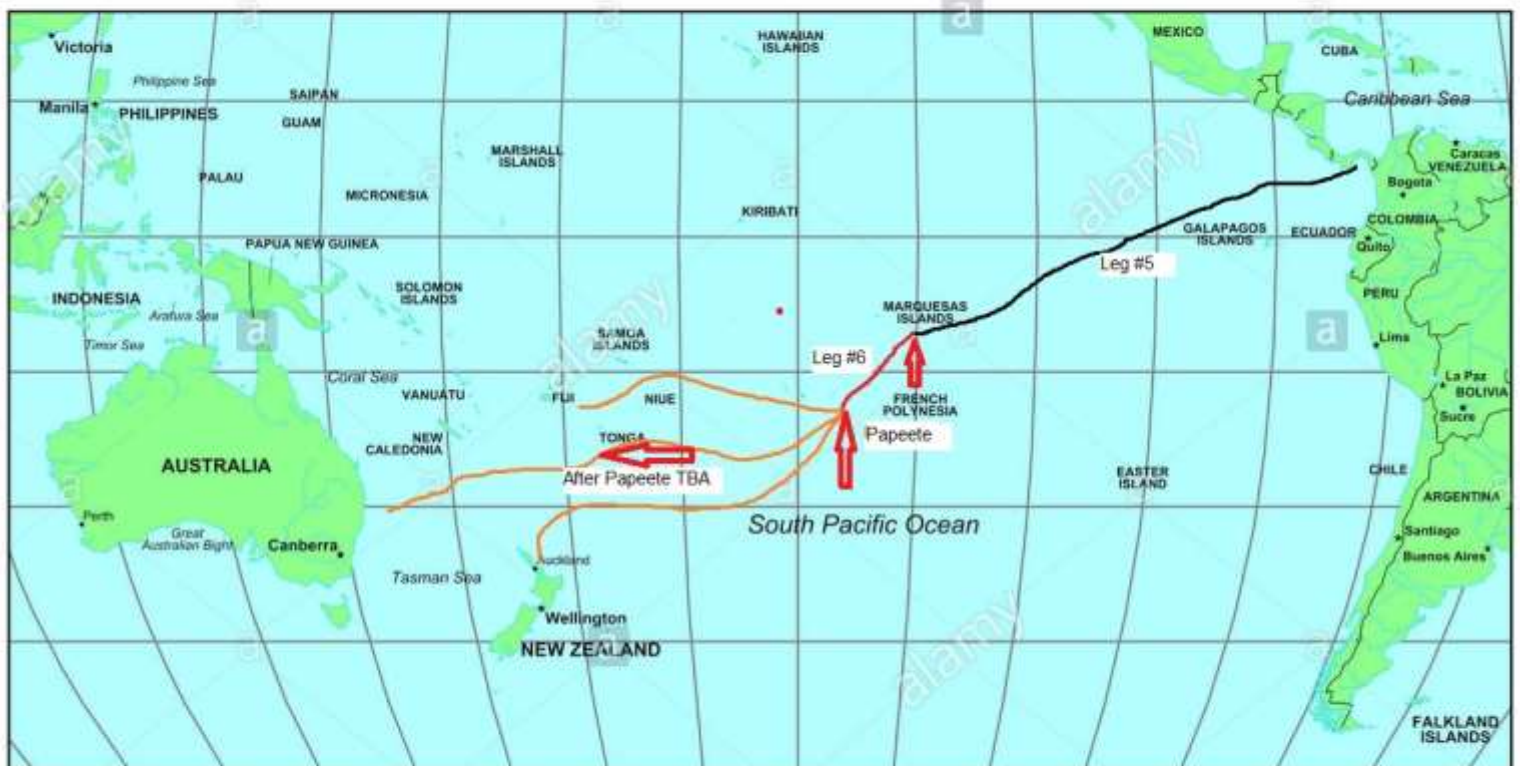


**There are LIMITED berths available on each leg so 1st in best dressed!**  
**If you are interested let Tony know asap to avoid disappointment**  
A sailing holiday OR a rare opportunity for an OCEAN SAILING MASTERCLASS  
Build your confidence, sea miles & skills to be able to cross an ocean on your own boat? Maybe kick start your sailing career right here!!!  
Possibly you've dreamed... "One day I'd really like to sail across an ocean" OR "The Panama Canal is on my bucket list" OR "Tahiti looks nice!" (it is)  
Right here you can convert your dreams into reality!  
Tony Mowbray's Adventure Sailing Expeditions specialise in providing ordinary every day people with extraordinary experiences.





## South Pacific Ocean



*A little about the boat:* “Solo Globe Challenger” (SGC) aka BowTie Lady is a COLE 43 designed by Aussie, Peter Cole around 1969. Production followed with SGC being launched in 1984. Approx. 30 were built in total



The Cole 43 is freely acknowledged as being a real little battleship! Tough as teak....”***When the going gets tough...the Cole 43 gets going!***”

They have magnificent lines leading many sailors & non sailors to ask/comment..  
***She’s absolutely beautiful!...What design is she?***”

Back in 1969 large volume boats were not thought of so when compared todays production boats SGC is a much compact and less voluminous boat all round BUT If you want cross an Ocean then a Cole 43 is an admirable choice



*A little about Tony:* He competed in his 1st Sydney to Hobart yacht race in 1973 aged 18yrs. He has competed in 15 “Hobart” races

He and his crew survived the fatal 1998 Hobart race on Solo Globe Challenger but 3 crew were airlifted to a chopper and 2 more transferred to a warship. 6 men on other boats died.



In 2000/01 Tony spent 181 days at sea continuously on SGC sailing solo, non stop & unassisted around the world (22,000 nm) ....In 2003 he sailed SGC to Antarctica...

From 2006 –2017 using his other yacht “Commitment” he ran adventure sailing trips to Antarctica, Cape Horn & the Patagonian glaciers & fjords

The adventure continues! Do you want to sign on?

[www.tonymowbray.com.au](http://www.tonymowbray.com.au)

[www.adventuresailingexpeditions.com](http://www.adventuresailingexpeditions.com)

**SAILING SCHEDULE:** plus days either side for departure prep & arrival

**Leg #1 Sicily to Canary Islands**

29th Nov-13th Dec 2018 14 days sailing approx + 4 = 18 days

AU\$3600

**Leg #2 Canary Islands to Caribbean**

18th Dec 2018-10th Jan 2019 23 days sailing approx + 4 = 27 days

AU\$4490

**Leg #3 Caribbean to start of Panama Canal (Atlantic side)**

17th Jan -27th Jan 2019 10 days sailing approx + 4 = 14 days

AU\$2940

**Leg #4 Transit Panama Canal**

3rd - 4th Feb 2019 2 days transit time approx + 5 = 7 days

AU\$2450

**Leg #5 Panama Canal (Pacific side) to Marquesas, Tahiti**

8th Feb—12th March 2019 32 days sailing approx + 4 = 36 days

AU\$5475

**Leg #6 Marquesas, Tahiti to Papeete, Tahiti**

17th—23rd March 2019 6 days sailing approx + 4 = 10 days

AU\$2300

**Legs #7 & onwards Tahiti to Newcastle, Australia**

Route & dates to be determined ....register your interest

- a) *Dates are close to the mark but as time goes by there may be some subtle change ( Would not be an adventure if everything was cast in stone)*
- b) *Included is all food (and plenty of it) snacks, drinks etc. whilst aboard*
- c) *Exclusions include but are not limited to airfares, travel insurance, visa charges, alcohol, any meals or accommodation ashore.*



To book a berth or for more information contact:

**TONY MOWBRAY**

E: [tony@tonymowbray.com.au](mailto:tony@tonymowbray.com.au)

Ph.: +61 (0) 428 653071

[www.tonymowbray.com.au](http://www.tonymowbray.com.au)

&

[www.adventuresailingexpeditions.com](http://www.adventuresailingexpeditions.com)

